



COMMUNITY RISK MANAGEMENT PLAN 2022-2026

MATCHING PREVENTION,
PROTECTION AND EMERGENCY
RESPONSE INTERVENTIONS
TO RISK



CONTENTS

	PAGE NO
Managing our Risks	3
Property Risks	4
Fires in Dwellings (Accidental and Deliberate)	5
Fires in Industrial and Commercial Buildings	6
Fires in Waste and Recycling Sites	7
Fires in Other Buildings	8
Fires in Tall Buildings	9
Fires in Heritage Buildings	10
Transport Networks	11
Road Traffic Collisions	12
Road Vehicle Fires	13
Rail	14
Aircraft	15
Fires in Water Vessels	16
High Hazard Industrial	17
High Hazard Industrial (Fires, Toxins, Release, Explosion)	18
Environmental	20
Flooding	21
Wildfires	22
Nuisance Fires	23
Technical Rescues	24
Rescues from Water	25
Rescues from Height or Depth	26
Rescues from Collapsed Structures	27
Animal Rescues	28
Bariatric Rescues	29
Terrorist Attacks	30
Terrorist Incidents	31

Managing our Risks

The way we manage risk in Cleveland is simple: we adopt a balanced approach of prevention, protection and emergency response interventions.

Prevention

One of the biggest factors in the number of fires that we attend is how people behave; this includes people at home, at work, the elderly and the young. We believe that by influencing and changing behaviours the number of fires can be reduced along with the number of injuries and deaths that result from them.

Protection

Our protection services are at the heart of improving business safety and are centred on delivering the Authority's duty to enforce the Regulatory Reform (Fire Safety) Order 2005 (FSO).

Emergency Response

No-one can predict when an emergency will happen and what type of event that will be. That's why we must be fully equipped to respond to every situation so that the right number of trained firefighters are sent with the right type of equipment to resolve the incident in the most effective way, with the lowest risk to lives, businesses and property.



Our CRMP sets out the key elements of our prevention, protection and emergency response approach. This document matches those interventions to our risk.

Matching our resources to our risks in this integrated way supports the achievement of our corporate outcomes:

- Safer Homes
- Safer Buildings
- Safer Transport Infrastructure
- Safer High Hazard Industries
- Safer Neighbourhoods
- Supported National Resilience
- Improved Health Outcomes



PROPERTY

Dwellings, Industrial and Commercial Buildings,
Tall Buildings, Heritage Buildings, Other
Buildings





Fires in Dwellings (Accidental and Deliberate)

The safety of our communities is our number one priority and we believe the most effective way to save lives, reduce injuries and other losses through fire and other emergencies is to reduce the number of incidents that occur. Helped by our integrated approach to community protection, our residents are less likely to have a fire in the home, when compared to elsewhere in the country. In the event of a house fire, we will respond in the fastest time possible.

Prevention

We will:

- target our prevention activities efficiently to those people in our communities who are 'most at risk'
- provide education and advice to reduce the likelihood of an accidental dwelling fire
- provide smoke alarms and safety equipment to reduce the impact of a fire in the home
- develop our working practices to support the public health agenda through the delivery of 'home fire safety visits' to higher-risk people in their homes
- contribute to the safeguarding of children and vulnerable adults
- work with other agencies to ensure the safety of vulnerable people
- ensure that our crews are well trained and equipped
- monitor, evaluate and review the causes of accidental dwelling fires
- evaluate our prevention activities

Emergency Response

We will:

- protect people, property and the environment from harm as a result of fires and other emergencies by providing an effective emergency response to fire-related incidents and other emergencies 24-hours a day; 365 days a year
- attend all property fires within an average of 7 minutes. We will ensure that the Brigade's operational resources (fire engines and firefighters) arrive at incidents in Teesside as quickly as possible
- provide an 'Equal Entitlement' in our emergency response. No matter where our residents live, they should expect a similar emergency response in terms of the resources deployed and the time taken to arrive
- investigate the cause of all fires and provide advice and education to prevent a re-occurrence
- provide residents with specialist fire survival guidance from our professionally trained Fire Control Operatives
- continue to innovate and reflect good practice in our procedures through the adoption of National Operational Guidance



Fires in Industrial and Commercial Buildings

Our number one priority is to keep the people of Teesside safe; this extends beyond fires in the home. We utilise the skills and expertise of our professionally qualified and experienced fire protection teams to enhance the safety of our communities through the enforcement of the Regulatory Reform (Fire Safety) Order 2005. This ensures that businesses on Teesside are protected from fire. In the event that we do have to attend a fire within a commercial building, we will respond with the appropriate resources in the fastest time possible.

Prevention

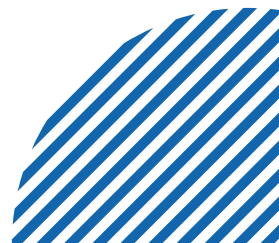
We will:

- carry out fire safety audits and inspections to ensure that all buildings are as safe as possible
- ensure that our risk based inspection programme identifies and targets higher risk buildings
- engage with building owners to provide education, advice and fire safety equipment if needed
- provide safety advice via our Fire Safety Helpdesk
- send E-Letters to members of the Federation for Small Businesses and the Chambers of Commerce in relation to fire safety
- provide fire safety information and resources for business owners on our website
- reduce the number of false alarms
- deal with complaints or concerns quickly
- ensure our enforcement officers adhere to the Regulators Code and work with partners such as Better Business For All to provide support and advice

Emergency Response

We will:

- attend all building fires within an average 7 minutes. We will ensure that the Brigade's operational resources (fire engines and fire-fighters) arrive at incidents in Teesside as quickly as possible
- ensure that crews respond with the most appropriate equipment and skills
- investigate the cause of all fires and provide advice and education to prevent a re-occurrence
- audit premises to ensure compliance with fire safety requirements
- enforce fire safety legislation where appropriate
- maximise the opportunity for organisational learning by debriefing after each commercial building fire





Fires in Waste and Recycling Sites

Fires in waste sites are often difficult to extinguish, need a lot of resources for long periods and can have serious effects on public health, the environment, the safety of our firefighters and our local communities. We will dispatch our fire engines to a fire at a waste or recycling site so that operational crews attend in the fastest time possible.

Prevention

We will:

- provide operational crews with up to date operational intelligence through site familiarisation visits
- continue our partnership working with the Local Resilience Forum and Cleveland Emergency Planning Unit to maintain an understanding of the risks within our area
- work alongside premises owners and the Environment Agency to ensure sites are safe and provide no significant risk to the environment
- provide fire safety information and resources for business owners on our website
- engage with building owners to provide education, advice and fire safety equipment if needed

Emergency Response

We will:

- dispatch an immediate response to these incidents, to minimise the risk of the fire growing or spreading
- ensure that crews respond with the most appropriate equipment and skills
- utilise the skills of our professionally qualified Waste Fire Tactical Advisors to provide specialist support to operational crews in order to bring any incidents to a safe and efficient close
- secure adequate water supplies to allow effective firefighting
- initiate the Joint Emergency Service Interoperability Principles to allow effective partnership working and mitigate impact on the environment
- produce Emergency Response Plans where appropriate to provide additional assistance to our operational commanders at sites of significant risk
- work alongside Cleveland Police to investigate the cause of the fire
- maximise the opportunity for organisational learning by debriefing after each fire at waste and recycling sites.



Fires in Other Buildings

We attend fires in other buildings such as sheds, huts, private garages and recycling containers. In the event of a fire of this nature we will dispatch a fire appliance in the quickest time possible.

Prevention

We will:

- ensure that we give advice to homes and business owners on how to keep their buildings and property safe from fire
- use our local knowledge and risk data to focus on our known 'hot-spot' deliberate fire areas
- work collaboratively with our Safer Partnerships to develop localised, coordinated, and multi-agency driven plans to deal with Anti-Social Behaviour (ASB) and arson. This includes the reporting and securing of premises that may be at risk from a deliberate fire
- provide Cleveland Police with the details of any deliberate building fires that we attend
- run Social Media Campaigns to educate and inform the public about keeping their property safe from fire
- monitor our performance through the review and evaluation our Arson Reduction Strategy

Emergency Response

We will:

- dispatch an immediate response to these incidents, to minimise the risk of the fire growing, or spreading to other buildings or property
- ensure that crews respond with the most appropriate equipment and skills utilising our dedicated Small Fire Units where appropriate
- investigate the cause of all fires and provide advice and education to prevent a re-occurrence
- liaise with Cleveland Police in the sharing of evidence and information that may lead to the prosecution of those involved in Anti-Social Behaviour and arson





Fires in Tall Buildings

We focus on keeping the residents of our tall buildings safe. High rise properties and offices are not deemed to be at a higher risk from fire, but we recognise that escaping from tall buildings is more complicated and takes more time compared to a single-family house. Our dedicated prevention and protection teams continue to work with building owners to ensure compliance with new and existing legislation. If a fire starts in a high rise building, we will ensure that our crews arrive in the quickest time possible.

Prevention

We will:

- carry out fire safety audits and inspections to ensure that tall buildings are as safe as possible
- ensure that our risk based inspection programme identifies and targets higher risk buildings
- engage with residents and building owners to provide education, advice and fire safety equipment if needed
- inspect, train and exercise to ensure that our crews are familiar with high rise buildings
- monitor emerging legislation to help building owners to understand their responsibilities
- further reduce the number of false alarms
- deal with complaints or concerns quickly
- enforce fire safety legislation where appropriate

Emergency Response

We will:

- attend all property fires within an average 7 minutes. We will ensure that the Brigade's operational resources (fire engines and fire-fighters) arrive at incidents in Teesside as quickly as possible
- ensure that crews respond with the most appropriate equipment and skills
- investigate the cause of all fires and provide advice and education to prevent a re-occurrence
- audit premises to ensure compliance with fire safety requirements
- produce bespoke Emergency Response Plans for all of our residential high-rise buildings
- continue to innovate and learn from the experiences of others to ensure our high-rise techniques reflect best practice.



Fires in Heritage Buildings

Teesside's rich heritage includes a number of Grade I, II and III listed structures. These structures are important to us. In the event of a fire we will respond as quickly as possible.

Prevention

We will:

- carry out fire safety audits and inspections to ensure that all buildings are as safe as possible
- ensure that our risk based inspection programme identifies and targets higher risk buildings
- engage with residents and building owners to provide education, advice and fire safety equipment if needed
- inspect, train and exercise to ensure that our crews are familiar with high rise buildings
- monitor emerging legislation to help building owners to understand their responsibilities
- further reduce the number of false alarms
- deal with complaints or concerns quickly
- enforce fire safety legislation where appropriate

Emergency Response

We will:

- attend all property fires within an average 7 minutes. We will ensure that the Brigade's operational resources (fire engines and fire-fighters) arrive at incidents in Teesside as quickly as possible
- ensure that crews respond with the most appropriate equipment and skills
- investigate the cause of all fires and provide advice and education to prevent a re-occurrence
- audit premises to ensure compliance with fire safety requirements
- produce bespoke Emergency Response Plans for all of our residential high-rise buildings
- continue to innovate and learn from the experiences of others to ensure our high-rise techniques reflect best practice.



TRANSPORT NETWORKS

Road, Rail, Air, Sea, River, Water





Road Traffic Collisions

Teesside has a diverse and complex road network ranging from main arterial 'A' roads with fast moving traffic, to more rural settings with their own associated risks. As our road networks continue to change and develop, keeping people safe on our roads remains a priority. We aim to attend all life risk or life threatening RTCs as quickly as possible with our range of fire engines offering specialist staff and equipment with the capabilities to minimise harm to the occupants of vehicles involved.

Teesside is also one of the North East's major manufacturing destinations and this brings with it significant Large Goods Vehicle movements. Cleveland's chemical and manufacturing industries mean that a large range of Hazardous Materials are transported by road each day and crews train to be capable of dealing with the diverse range of potential incidents that this brings.

Prevention

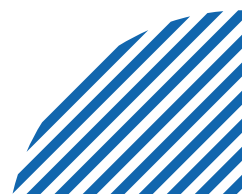
We will:

- work with Cleveland Road Safety Partnership to develop our road safety campaigns focussing on people in high risk age group 16-35, pedestrians and cyclists as part of the Community Safety Partnership
- provide education and advice via our dedicated Learn and Live - Road Safety Co-ordinator
- learn from incidents and experiences of other Fire and Rescue Services through Joint Organisational Learning
- carry out post incident analysis to identify and address any emerging trends
- engage with the public at all levels to improve driver awareness and minimise risk to them from vehicle movements
- evaluate our activities in relation to road traffic collisions

Emergency Response

We will:

- attend all Road Traffic Collisions that pose a risk to life within an average 8 minutes
- ensure that the Brigade's operational resources (fire engines and fire-fighters) arrive at incidents in Teesside as quickly as possible
- utilise our strategically based enhanced capability rescue appliances to deal with high level technical rescues
- ensure that crews respond with the most appropriate equipment and skills
- initiate the Joint Emergency Service Interoperability Principles to allow effective partnership working
- continue to innovate and reflect best practice in our procedures through the adoption of National Operational Guidance





Road Vehicle Fires

We have a long and proud history of contributing to the improvement of our local communities through the prioritisation of safer neighbourhoods across Teesside. Although road vehicle fires account for a small number of the incidents that we attend, a high proportion of them are of a deliberate nature. Vehicle fires are a blight on our local communities and not only do they cause unwanted financial loss, but they also pose a risk to life when they occur. Our fire engines will be immediately despatched to attend all vehicle fires in the quickest time possible.

Prevention

We will:

- provide education and advice via our dedicated Learn and Live – Road Safety Co-ordinator to drivers across the Teesside area
- ensure that we target our prevention activities and associated resources efficiently by paying special attention to those most at risk in our communities and continue to participate in community initiatives alongside our multi-agency partners
- continue to develop intelligence-based targeting directives focusing on our known ‘hot-spot’ areas
- work collaboratively with our Safer Partnerships group members to develop localised, coordinated, and multi-agency driven plans to deal with Anti-Social Behaviour (ASB) and arson. This includes the reporting and removal of abandoned vehicles in our communities
- provide Cleveland Police with the details of any deliberate vehicle fires that we attend
- run Social Media Campaigns to educate and inform the public during specific demand spikes.

Emergency Response

We will:

- dispatch an immediate response to these incidents, to minimise the risk of the fire growing, or spreading to property
- ensure that crews respond with the most appropriate equipment and skills
- investigate the cause of all fires and provide advice and education to prevent a re-occurrence
- liaise with Cleveland Police in the sharing of evidence and information that may lead to the prosecution of those involved in Anti-Social Behaviour and arson



Railway Incidents

Cleveland has an extensive rail network carrying both people and freight throughout the area. This is set to increase over the coming years as Teesside becomes one of the UK's Freeports with increased rail traffic bringing in raw materials and exporting products. The projected high speed rail link from Teesside to London is also due to be expanded following the completion of a £34 million upgrade to Middlesbrough train station.

Rail incidents are rare, yet crews familiarise themselves with the associated risks to enable them to respond effectively as required. A cadre of Hazardous Materials Advisors are available 24/7 to assist with incidents involving dangerous cargo and are specialists in dealing with such incidents.

Prevention

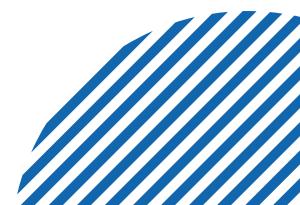
We will:

- continue to exercise and work with our partners in the rail industry to ensure understanding of risk and safe working practices are shared
- provide operational crews with up to date operational intelligence through site familiarisation visits
- continue our partnership working with the Local Resilience Forum and Cleveland Emergency Planning Unit to maintain an understanding of the risks within our area
- learn from incidents and experiences of other Fire and Rescue Services through Joint Organisational Learning
- carry out post incident analysis to identify and address any emerging trends

Emergency Response

We will:

- ensure that crews respond with the most appropriate equipment and skills
- utilise the skills of our professionally qualified rail network colleagues to provide specialist support to operational crews in order to bring any incidents to a safe and efficient close
- initiate the Joint Emergency Service Interoperability Principles to allow effective partnership working and mitigate impact on the environment
- utilise specialist advice such as Rail Incident Officers and British Transport Police when attending incidents of a complex nature
- maximise the opportunity for organisational learning by debriefing after each fire at each Railway incident





Aircraft Incidents

Durham Tees Valley Airport has been earmarked by the Tees Valley Mayor for increased passenger numbers and flight destinations over the coming years as the site undergoes extensive regeneration. Cargo flights are set to increase too across Teesside resulting in an increase in air traffic, importing and exporting products. Recreational light aircraft use is becoming increasingly popular and brings with it its own associated risks, not only at the regional airport but at private landing strips throughout Cleveland.

James Cook University Hospital is a major trauma centre and as such regularly receives patients via helicopter direct to their site in an urban area of Middlesbrough. Crews are conversant with the risks associated and actively work with the hospital to mitigate these.

Aircraft incidents can have a devastating impact on communities through loss of life and infrastructure. Our crews train with our counterparts from Durham & Darlington Fire & Rescue Service, and Airport firefighters from Durham Tees Valley Airport to ensure we are familiar with handling such a potentially large scale incident.

Prevention

We will:

- continue to exercise and work with our partners in the airport industry and neighbouring Fire and Rescue Services to ensure understanding of risk and safe working practices are shared
- provide operational crews with up to date operational intelligence through site familiarisation visits
- continue our partnership working with the Local Resilience Forum and Cleveland Emergency Planning Unit to maintain an understanding of the risks within our area
- learn from incidents and experiences of other Fire and Rescue Services through Joint Organisational Learning
- carry out post incident analysis to identify and address any emerging trends

Emergency Response

We will:

- ensure that crews respond with the most appropriate equipment and skills
- utilise the skills of our professionally qualified air industry colleagues to provide specialist support to operational crews in order to bring any incidents to a safe and efficient close
- initiate the Joint Emergency Service Interoperability Principles to allow effective partnership working and mitigate impact on the environment
- utilise specialist advice such as Airport firefighters and British Transport Police when attending incidents of a complex nature
- maximise the opportunity for organisational learning by debriefing after each incident involving aircraft



Fires in Water Vessels

Teesside has one of the busiest freight ports in the UK and as such has a wide range of vessels coming in and out of the area on a daily basis. This is set to increase over the coming years as Teesside becomes one of the UK's Freeports.

Thankfully, fires on ships are a rare occurrence, although the vessels and their diverse cargo do create a high degree of risk for fire crews and as such require a specialist approach. Water Incident Managers and Maritime Tactical Advisors are specialists in dealing with such incidents by liaising with partner agencies such as MCA, Harbour Master and RNLI.

Prevention

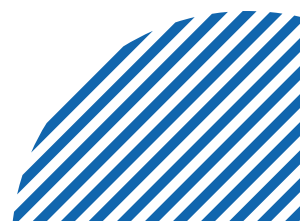
We will:

- continue to train and work with our partners in shipping and associated industries to ensure understanding of risk and safe working practices
- provide operational crews with up to date operational intelligence through site familiarisation visits
- continue our partnership working with the Local Resilience Forum and Cleveland Emergency Planning Unit to maintain an understanding of the risks within our area
- learn from incidents and experiences of other Fire and Rescue Services through Joint Organisational Learning
- carry out post incident analysis to identify and address any emerging trends

Emergency Response

We will:

- dispatch an immediate response to these incidents, to minimise the risk of the fire growing or spreading
- ensure that crews respond with the most appropriate equipment and skills
- utilise the skills of our professionally qualified Water Incident and Maritime Tactical Advisors to provide specialist support to operational crews in order to bring any incidents to a safe and efficient close
- initiate the Joint Emergency Service Interoperability Principles to allow effective partnership working and mitigate impact on the environment, especially waterways
- produce Emergency Response Plans where appropriate to provide additional assistance to our operational commanders at locations of significant risk
- maximise the opportunity for organisational learning by debriefing after each fire in a maritime setting





HIGH HAZARD INDUSTRIAL

High Hazards Industrial (Fires, Toxic Release, Explosion, Radiation)





High Hazard Industrial Incidents (Fires, Toxic Release, Explosion, Radiation)

Teesside is a major production centre for the chemical industry with 29 'top tier' COMAH sites located within the area. Should serious incidents occur in such sites, it would take the deployment of significant fire service resources, in terms of both equipment and people with suitable skills and abilities, to bring them to a safe conclusion. We also have seven solar powered energy farms, 12 onshore and one offshore wind farms; and two 4 bio-mass (wood pellets) power stations are being constructed in Port Clarence and Tees Port to produce electricity for the national grid.

Prevention

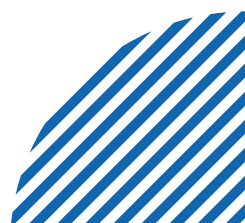
We will:

- continue to train and work with our partners in industry to ensure understanding of risk and safe working practices
- facilitate Safety, Health, and Environmental Management meetings between our industrial partners to ensure shared best practice in relation to safety
- continue our partnership working with the Local Resilience Forum and Cleveland Emergency Planning Unit to maintain an understanding of the risks within our area
- ensure we have up to date Operational Intelligence by gathering Site Specific Risk Information (SSRI), completing the Provision of Risk Information System (PORIS)
- embed multi agency exercises at high hazard installations into our Exercise annual calendar
- liaise with the HSE through joint inspections and investigations
- learn from incidents and experiences of other Fire and Rescue Services through Joint Organisational Learning

Prevention

We will:

- carry out post incident analysis to identify and address any emerging trends
- support work carried out by the HSE and Environment Agency, who are responsible for the enforcement of COMAH regulations to ensure that these industries take all measures necessary to prevent major accidents involving dangerous substances and limit the consequences to people and the environment.





High Hazard Industrial Incidents (Fires, Toxic Release, Explosion, Radiation)

Emergency Response

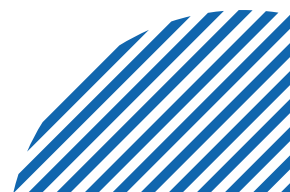
We will:

- attend all Industrial Incidents within an average 7 minutes. We will ensure that the Brigade's operational resources (fire engines and fire-fighters) arrive at incidents in Teesside as quickly as possible
- ensure that crews respond with the most appropriate equipment and skills, with the most up to date Operational Intelligence available through our suite of Site Specific Risk Information
- produce detailed Emergency Response Plans based around the sites Reasonable Worst Case Planning Scenario to allow crews to resolve incidents as safely and as quickly as possible
- maintain a bespoke Firefighting capability in the form of our dedicated foam units to help our crews extinguish difficult-to-fight fires
- utilise the skills of our professionally qualified Hazardous Materials Tactical Advisors and Detection Identification and Monitoring Advisors to provide specialist support to operational crews in order to bring any incidents to a safe and efficient close
- liaise with our industrial partners in the maintenance of a mutual aid register that allows us to call on specialist assets and equipment to tackle incidents of a larger scale or more complex nature

Emergency Response

We will:

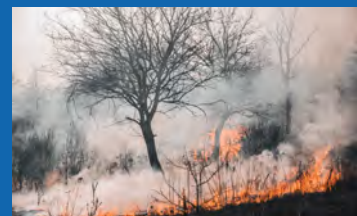
- utilise our bespoke state of the art training facility to bolster our operational readiness and capability for dealing with industrial incidents.
- maintain a cadre of Hazardous Materials Advisors to provide specialist support to operational crews in order to bring any incidents to a safe and efficient close
- initiate the Joint Service Interoperability Principles to allow effective partnership working and mitigate the impact on the environment
- contact national specialist advice centres when attending incident of a complex nature
- maximise the opportunity for organisational learning by debriefing after each incident involving hazardous materials





ENVIRONMENTAL

Flooding, Wildfire, Nuisance Fires





Flooding

Although there is currently no statutory duty for CFB to respond to flooding incidents, we know from experience that these incidents are likely to occur in our area and the risk is therefore foreseeable. We have invested in specialised equipment and training to ensure we are able to effectively respond to such incidents. The Brigade also supports other areas of the country which have experienced severe flooding by deploying some of our national resilience assets to deal with major flooding incidents.

Prevention

We will:

- continue to maintain CFB Flood Response capability. Planning is based on the best risk information available
- continue to train and work with our partners in industry to ensure understanding of risk and safe working practices
- learn from incidents and experiences of other Fire and Rescue Services through Joint Organisational Learning
- continue our partnership working with the Local Resilience Forum and Cleveland Emergency Planning Unit to maintain an understanding of the risks within our area
- carry out post incident analysis to identify and address any emerging trends

Emergency Response

We will:

- utilise our strategically based Flood/Water rescue unit to deal with high level technical rescues
- ensure that crews respond with the most appropriate equipment and skills
- work alongside our partners such as Mountain rescue and coastguard for technical rescues requiring specialised skills
- respond Nationally when requested by sending our 'C' type team that is declared on the National Assets Register
- utilise the skills of our professionally qualified Water Incident Managers and Flood Tactical Advisor to provide specialist support to operational crews in order to bring any incidents to a safe and efficient close
- initiate the Joint Emergency Service Interoperability Principles to allow effective partnership working and mitigate impact on the environment
- contact national specialist advice centres when attending incidents of a complex nature
- maximise the opportunity for organisational learning by debriefing after each flooding incident



Wildfires

Cleveland Fire Brigade is home to some of the most picturesque countryside in the North East. With extensive moorland and areas of natural beauty we are sometimes required to attend wildfires across various parts of Teesside. We know that wildfires can start for many reasons, such as mishandled campfires or barbecues, malicious activity such as deliberate fire setting, infrastructure incidents such as sparks from electricity lines or rail transport, and natural phenomena such as lightning (although this is rare). Hot, dry and windy weather are ideal conditions for wildfires to start and spread.

Prevention

We will:

- work with colleagues from partner agencies and community groups to try and prevent both arson and accidental fires in rural locations from occurring
- provide education to schools on the importance of caring for our areas
- learn from incidents and experiences of other Fire and Rescue Services through Joint Organisational Learning
- continue our partnership working with the Local Resilience Forum and Cleveland Emergency Planning Unit to maintain an understanding of the risks within our area
- carry out post incident analysis to identify and address any emerging trends

Emergency Response

We will:

- dispatch an immediate response to these incidents, to minimise the risk of the fire growing or spreading
- ensure that crews respond with the most appropriate equipment and skills
- utilise the skills, knowledge, and experience of Wildfire Tactical Advisors to extinguish these types of fire from various firefighting methodologies
- provide specialist crews and vehicles such as the Ford Ranger and Mercedes Unimog to allow us to reach the scene of operations quickly and initiate actions to prevent escalation and further damage to our beautiful wild areas
- produce Emergency Response Plans where appropriate to provide additional assistance to our operational commanders at locations of significant risk
- maximise the opportunity for organisational learning by debriefing after each fire in a maritime setting





Nuisance Fires

We remain committed to reducing arson and deliberate fires, and the various impacts that it brings to bear on people, local communities, local businesses, partners and the environment. The majority of fire related incidents that we attend, are deliberate nuisance fires that cause a blight on our communities, are of financial detriment to the local economy, and divert our resources away from other key activities. Any fire reported to Cleveland Fire Brigade will see fire engines sent immediately to ensure we respond in the fastest time possible.

Prevention

We will:

- target our prevention activities and associated resources efficiently by paying special attention to those most at risk in our communities and continue to participate in community initiatives alongside our multi-agency partners
- continue to develop intelligence-based targeting directives focusing on our known 'hot-spot' areas
- work collaboratively with our Safer Partnerships to develop localised, coordinated, and multi-agency driven plans to deal with Anti-Social Behaviour (ASB) and arson. This includes the reporting and removal of abandoned vehicles in our communities
- provide Cleveland Police with details of any deliberate vehicle fires that we attend
- run Social Media Campaigns to educate and inform the public during specific demand spikes
- provide advice, education and where required take proportionate interventions through our operational crews and dedicated fire setter intervention and education teams to reduce the amount of vehicle and nuisance fires in our area
- monitor our performance through the review and evaluation our Arson Reduction Strategy

Emergency Response

We will:

- dispatch an immediate response to these incidents, to minimise the risk of the fire growing, or spreading to property
- ensure that crews respond with the most appropriate equipment and skills utilising our dedicated Small Fire Units where appropriate
- investigate the cause of all fires and provide advice and education to prevent a re-occurrence
- liaise with Cleveland Police in the sharing of evidence and information that may lead to the prosecution of those involved in Anti-Social Behaviour and arson





TECHNICAL RESCUES

Water, Height and Depth, Building Collapse, Animals





Rescue from Water

There are a number of water-related risks across Cleveland with the River Tees posing a significant risk. The risk of members of the public entering the water and getting into difficulty appears to be on the increase. Our crews carry out training in these areas to ensure their knowledge of the hazards posed and ability to respond are first class. We continue to prepare for water rescue incidents on a daily basis and provide an emergency rescue response 24 hours a day.

Prevention

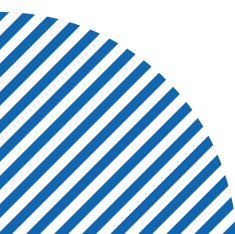
We will:

- support local and national initiatives around Water Safety Campaigns.
- continue to train and work with our partners to ensure understanding of risk and safe working practices.
- learn from incidents and experiences of other Fire and Rescue Services through Joint Organisational Learning
- continue our partnership working with the Local Resilience Forum and Cleveland Emergency Planning Unit to maintain an understanding of the risks within our area
- carry out post incident analysis to identify and address any emerging trends.

Emergency Response

We will:

- utilise our strategically based Flood/Water rescue unit to deal with high level technical rescues
- ensure that crews respond with the most appropriate equipment and skills
- work alongside our partners such as Mountain rescue and Coastguard for technical rescues requiring specialised skills
- utilise the skills of our professionally qualified Water Incident Managers to provide specialist support to operational crews in order to bring any incidents to a safe and efficient close
- initiate the Joint Emergency Service Interoperability Principles to allow effective partnership working and mitigate impact on the environment
- maximise the opportunity for organisational learning by debriefing after each incidents involving water rescue incidents





Rescue from Height or Depth

The multi-faceted role of a firefighter means that there is sometimes a requirement to affect rescues from height. Incidents of this nature can be extremely complicated and can often require specially trained teams of individuals to bring the rescue to a safe conclusion. Not only are all of our firefighters trained to carry out rescues from a height with the use of ladders, we also have a dedicated level three technical line rescue team who can respond to the more complex incidents.

Prevention

We will:

- continue to train and work with our partners in industry to ensure understanding of risk and safe working practices
- learn from incidents and experiences of other Fire and Rescue Services through Joint Organisational Learning
- continue our partnership working with the Local Resilience Forum and Cleveland Emergency Planning Unit to maintain an understanding of the risks within our area
- carry out post incident analysis to identify and address any emerging trends.

Emergency Response

We will:

- ensure all crews are trained to perform rescues from height through the use of ladders
- utilise our specialist Hydraulic Platform and Combined Aerial Rescue Pump at operational incidents involving rescues from height
- provide a Dedicated Level Three Technical Line Rescue Team to respond to complex incidents involving rescues from height
- work closely with our neighbouring Fire and Rescue Services ensuring arrangements in place to both offer and request mutual support where required
- work alongside our partners such as Mountain rescue and coastguard for incidents terrain specific rescues





Rescue from Building Collapse

We have a diverse range of buildings across the Teesside area, which may collapse if involved in fire, explosion or if they become unsafe through extreme weather events. Crews are provided with detailed premises information, which provides us with a good understanding of the buildings in our area. We also provide a dedicated line rescue team, who are able to operate on and around collapsed buildings. Through national resilience arrangements, we have access to a wide range of search and rescue resources to ensure that we can rescue people from collapsed buildings.

Prevention

We will:

- maintain up to date premises information on buildings as part of our risk-based inspection programme
- use our local knowledge and risk data to train in a wide range of buildings
- work collaboratively with local authority building control to ensure that buildings are designed and maintained in a safe condition
- train and exercise with national resilience crews
- provide height access and specialist line rescue equipment to crews

Emergency Response

We will:

- dispatch an immediate response to these incidents, to preserve life and deal with any other hazards, such as fire or further explosion
- ensure that crews respond with the most appropriate equipment and skills utilising our line rescue capability and safe systems of work
- request and deploy specialist search and rescue teams as part of our national resilience arrangements
- liaise with local authority building control to ensure that we maintain access to specialist engineers and surveyors
- consider the use of specialist capabilities, such as mines rescue or mountain rescue teams



Animal Rescue

We attend a variety of non-fire related incidents of where we provide a professional response to a number of special service incidents outside of our statutory duties. This can include the rescue of pets, livestock and wild animals. Animals in distress not only pose potential serious risks to the public, staff from other agencies and firefighters, but large animals in distress can also result in financial hardship and business loss for farmers. There is also an element of risk of members of the public suffering serious injury should they decide to attempt an animal rescue themselves. We therefore have a range of resources available to respond to this risk.

Prevention

We will:

- ensure that our crews are well trained and equipped
- learn from incidents and experiences of other Fire and Rescue Services through Joint Organisational Learning
- carry out post incident analysis to identify and address any emerging trends
- review National Operational Guidance when writing our procedures for incidents involving animals

Emergency Response

We will:

- liaise with the RSPCA to ensure the most appropriate resources are mobilised to any animal rescue that we attend
- ensure that crews respond with the most appropriate equipment and skills
- dispatch an immediate response to these incidents, based on risk, to minimise distress that the animal and the public is exposed to
- seek specialist advice from partner agencies when required





Bariatric Rescue

We respond to bariatric rescues at the request of the Ambulance Service or Other Agencies.

Emergency Response

We will:

- mobilise our dedicated line rescue team to assist the Ambulance Service with the rescue or lifting of bariatric patients
- utilise our specialist equipment to gain entry to properties to allow other emergency services to deal with medical emergencies



TERRORIST ATTACKS



Terrorist Incidents

The UK faces a serious and sustained threat from terrorism, including from international groups, domestic extremists and Northern Ireland related groups. The current UK threat level for international terrorism is 'Severe'³. Historically incidents have predominantly occurred in and around major cities in the UK, but all emergency services must be prepared to respond to an incident in their area, and work together to resolve both local and national incidents.

We have a statutory duty under the Civil Contingency Act to ensure we support a coordinated response to national emergencies alongside other responding agencies. Our support arrangements include various nationally provided specialist vehicles and equipment that we can deploy to a range of serious, significant or catastrophic incidents that have a national impact.

Prevention

We will:

- continue to monitor the UK national threat level
- provide our staff with training to be able to identify and appropriately act upon potentially terror related incidents
- ensure that we have operational procedures in place to deal with major incidents caused by terrorism, based on the current joint operational procedure
- continue our partnership working with the LRF and Cleveland EPU to maintain an understanding of the risks within our area
- learn from incidents and experiences of other FRSs through Joint Organisational Learning
- maintain a cadre of National Inter-Agency Liaison Officers who act as a link between CFB and other agencies including police, medical, military and security
- ensure staff are continuously updated on the UK and International threat picture
- align our training and exercises to National Operational Guidance and increase awareness of staff to identify and prevent incidents, working alongside our partners
- receive and disseminate 'prevent materials' in the form of bulletins and training videos.

Emergency Response

We will:

- dispatch an immediate response to terrorist related incidents
- ensure that crews respond with the most appropriate equipment and skills
- utilise the skills of our professionally qualified National Inter-Agency Liaison Officers to establish an early multi-agency link in order to bring any incidents to a safe and efficient close
- initiate the Joint Emergency Service Interoperability Principles to allow effective partnership working
- utilise our specialist National Resilience Resources to allow us to effectively respond to terrorist related incidents
- utilise the skills of our professionally qualified Hazardous Materials Tactical Advisors and Detection, Identification and Monitoring Officers to provide specialist support to operational crews in order to bring any incidents to a safe and efficient close
- maximise the opportunity for organisational learning by debriefing after each terrorist related incident



April 2022

Cleveland Fire Authority
Endeavour House
Training and Administration Hub
Queens Meadow Business Park
Hartlepool
TS25 5TH 01429 872311
communications@clevelandfire.gov.uk
www.clevelandfire.gov.uk

